

## TECHNICAL SPECIFICATIONS

### SYSTEM TYPE

Automatic clinical chemistry analyser – random access system, STAT samples processing

### THROUGHPUT

200 photometric tests/hour  
360 tests/hour with ISE

### SIMULTANEOUS MEASUREMENT ITEMS

Up to 45 photometric tests + 4 ISE

### SAMPLE TYPE

Serum, plasma, blood, urine, CSF, other biological fluids

### NO. OF PROGRAMMABLE PARAMETERS

No limit on Test parameters or calculated tests and 4 ISE parameters (Na, K, Cl, Li)

### ASSAY METHODS

End-point, kinetics, ISE (direct potentiometry)

### CALIBRATION TYPE

Linear (one point, multi point), exponential, polynomial, factor, cubic spline, Logit-Log 4P, Logit-Log 5P

### OPTICAL SYSTEM

Halogen lamp, 8 filters: 340, 405, 505, 546, 578, 600, 660 and 700 nm

### REAGENT TRAY

50 refrigerated positions (8-12°C)  
5, 20, 50 ml reagent containers

### SAMPLE TRAY

39 positions:  
Outer ring – 30 position for samples  
Inner ring – 9 positions for blanks, standards, calibrators, controls and ISE solutions

### REAGENT DISPENSING

One dispensing probe with liquid-level sensor  
Dispensed volumes:  
R1 50-300 µl – adjustable in 1 µl step  
R2 10-200 µl – adjustable in 1 µl step

### MINIMAL REACTION VOLUME

180 µl

### REACTION TRAY

45 reusable hard glass cuvettes, optical path length 5 mm

### MIXING SYSTEM

Independent stirrer

### QC

Levey-Jennigs charts, Westgard rules

### BARCODE READER

Built-in barcode reader for samples and reagents

### WATER CONSUMPTION

Maximum 6 litres/hour

### PC REQUIREMENTS

Operating system: Up to Win 10, Pentium 4, RAM 2 GB, HDD 200 GB

### POWER SUPPLY

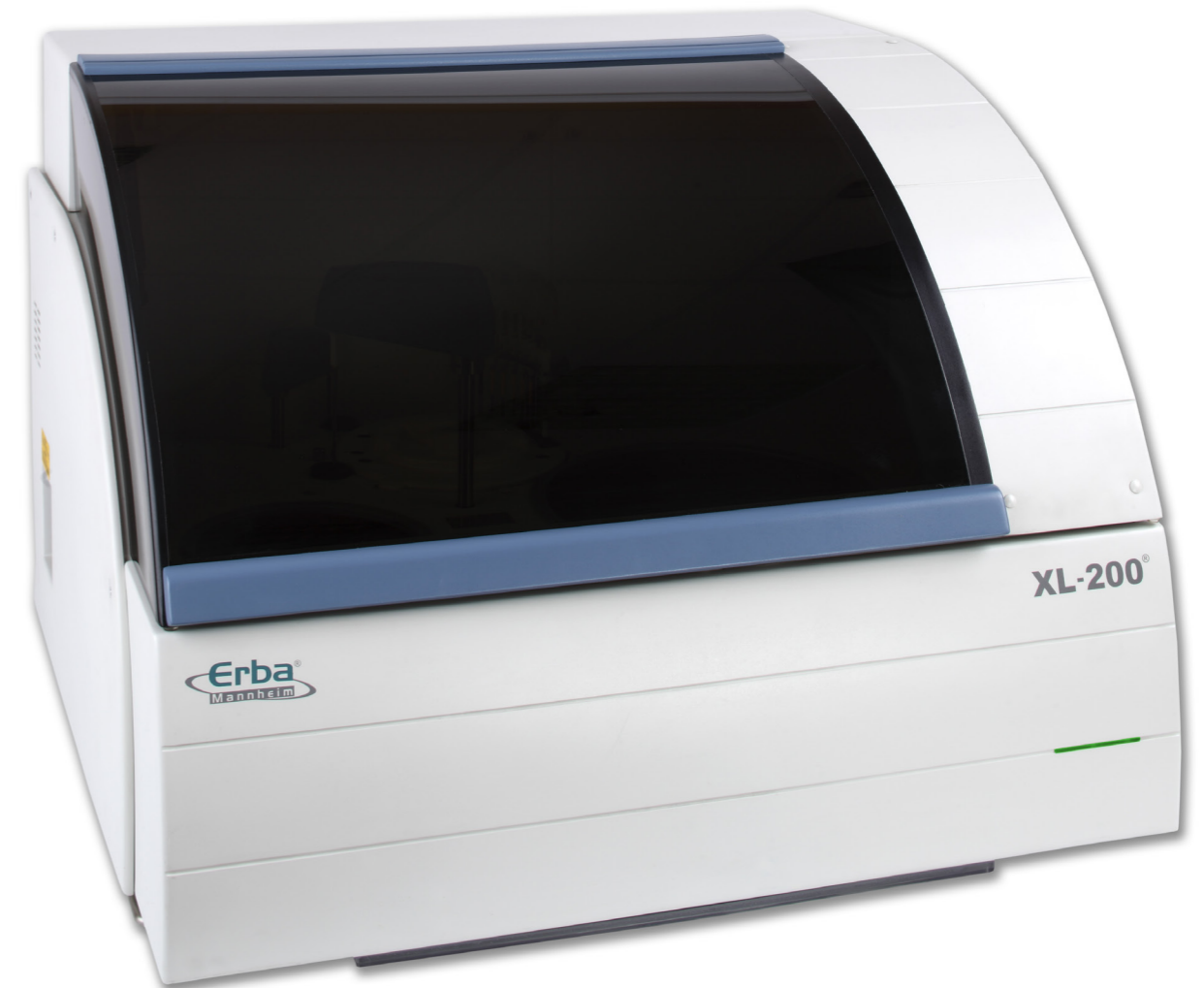
220 V ± 10 %, 50 Hz ± 5%, 600 VA

### DIMENSIONS

810 mm (w) x 700 mm (d)  
x 600 mm (h)

### WEIGHT

120 kg



OPTIMAL SOLUTION  
FOR SMALL AND MEDIUM  
LABORATORIES

**XL200**  
AUTOMATIC CLINICAL  
CHEMISTRY ANALYSER



**Erba Lachema s.r.o.**  
Karásek 2219/1d, 621 00 Brno, Czech Republic  
Phone: +420 517 077 111  
E-mail: sales@erbamannheim.com  
www.erbamannheim.com

TOTAL SOLUTIONS FOR CLINICAL DIAGNOSTICS

# XL200

Reliable automation  
of clinical chemistry analysis

## DISPENSING OF SAMPLES AND REAGENTS

- Sample volume: 2-70  $\mu\text{l}$  (in 0,1  $\mu\text{l}$  step)
- Reagent volume: R1 50-300  $\mu\text{l}$  (in 1  $\mu\text{l}$  step), R2 10-200  $\mu\text{l}$  (in 1  $\mu\text{l}$  step)
- Multifunctional probe equipped with liquid-level sensor and crash detector
- Auto-dilution of samples and calibrators

## ECONOMY

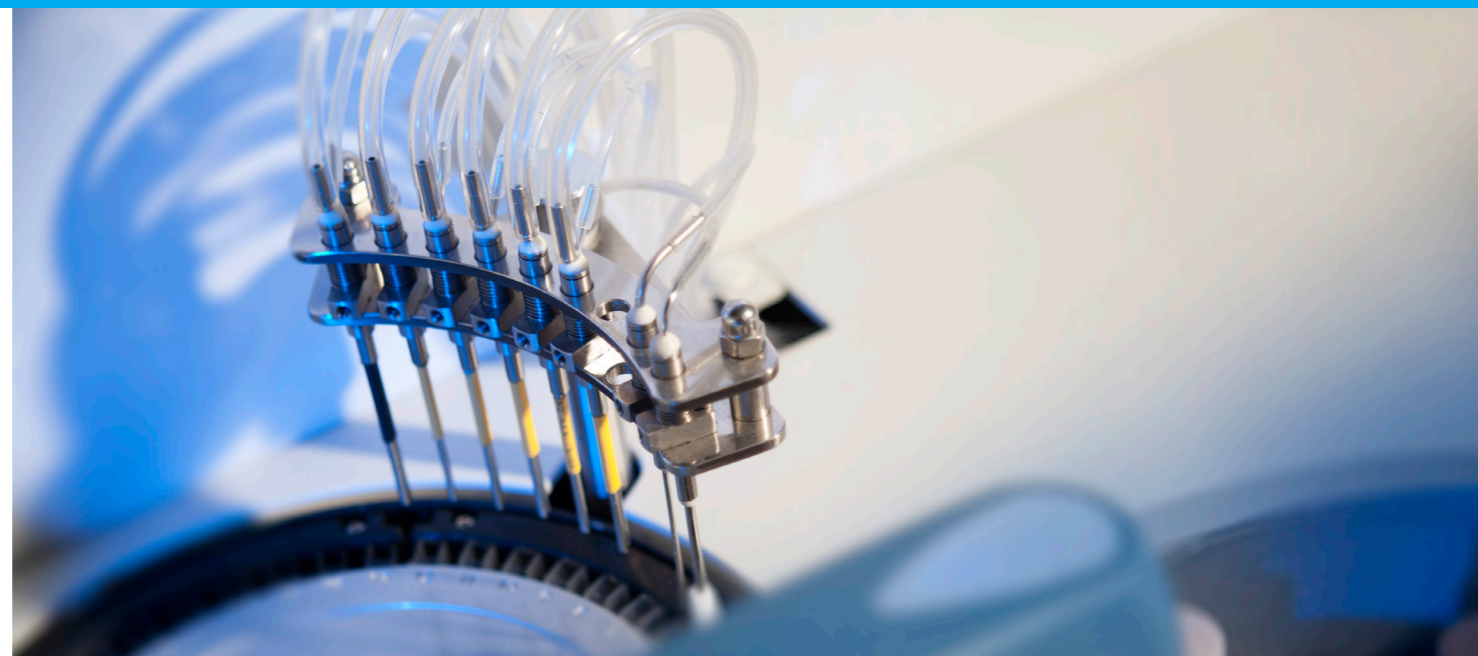
- Minimum reaction volume: 180  $\mu\text{l}$
- Reusable glass reaction cuvettes

## MIXING SYSTEM

- Independent stirrer
- 3 user selectable mixing speeds

## QUALITY CONTROL

- 4 levels of control material can be used
- Levey-Jennings graphs
- Twin Plot diagrams for monitoring of systematic and random error



## REAGENT TRAY

- 50 positions, 20 ml, 50 ml reagent containers, 5 ml tube with adaptor
- Reagent compartment with Peltier/air cooler (8-12°C)
- Option to use one reagent for several tests simultaneously

## SOFTWARE

- Convenient user interface
- Connection to LIS
- Statistical methods of processing results
- Data export in selected format

## REACTION UNIT

- 45 reusable hard glass cuvettes
- Possibility of replacement of individual cuvettes
- Wash station - cuvette rinsing and drying in 8 steps
- Automatic cuvette blank measurement before analysis
- Reaction temperature 37°C  $\pm$  0,2°C

## SAMPLE TRAY

- 39 positions for samples, blanks, standards, calibrators, controls and ISE solutions
- Primary tubes 5, 7 and 10 ml and cups
- STAT sample with priority in any position
- Possibility of programming up to 99 virtual trays



## MEASUREMENT MONITORING

- Color indication of sample analysis
- Option of monitoring the reaction in real time
- Reagent volume monitoring
- Informative reports on ongoing analyser status

